

II. ENERGY PRODUCTION AND PROCESSING

2.1. Imported Petroleum Products

The Ethiopian Petroleum Enterprise (EPE) imported 445,733 metric tones (MT) of petroleum products into the country in the first quarter of 2009/10. The figure showed a decline by 16.1 and 7.1 percent compared to the preceding

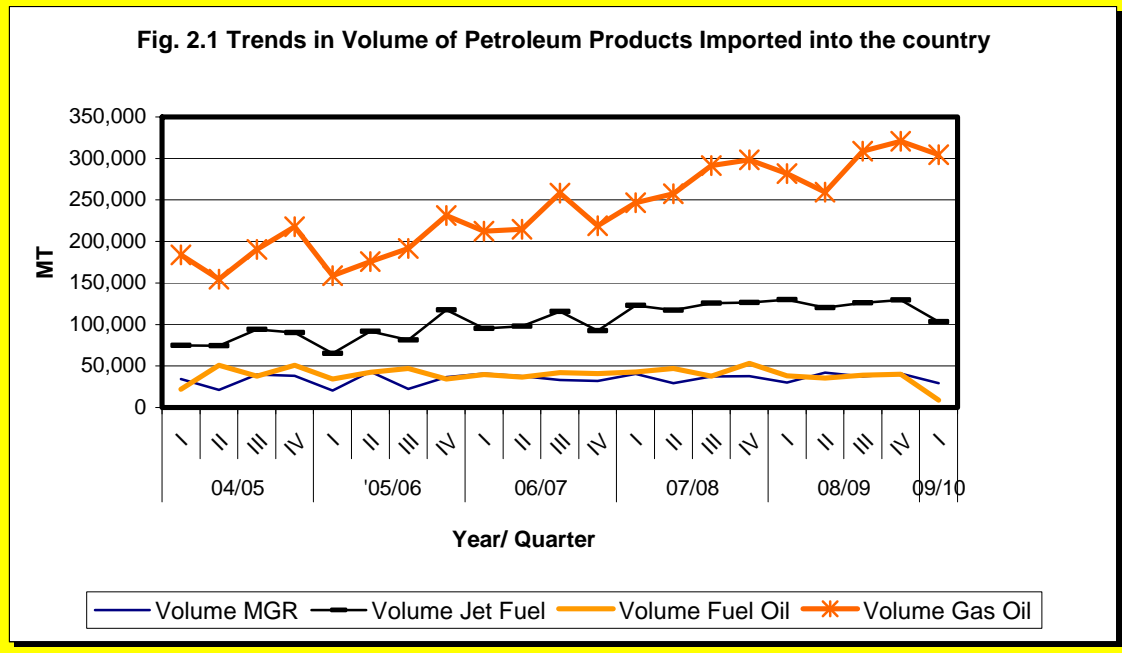
quarter and same quarter of last year, respectively. The year-on-year decline in volume was attributed to slow down in the volume of imports of all petroleum products (Table 2.1).

Table 2.1: Volume of Petroleum Products Imported

(In MT)

	2008/09				2009/10		Percentage Change	
	Qtr I		Qtr IV		Qtr I			
	A	Share In %	B	Share In %	C	Share In %	C/A	C/B
Regular Gasoline (MGR)	29,907	6.2	40,699	7.7	29,178	6.5	-2.4	-28.3
Jet Fuel	129,951	27.1	129,596	24.4	103,454	23.2	-20.4	-20.2
Fuel Oil	38,126	7.9	40,078	7.5	8,711	2.0	-77.2	-78.3
Gas Oil (ADO)	281,623	58.7	320,849	60.4	304,391	68.3	8.1	-5.1
Total	479,608	100.0	531,221	100.0	445,733	100.0	-7.1	-16.1

Source: Ethiopian Petroleum Enterprise(EPE)



Source: EPE

In value terms, petroleum import (C.I.F) peaked-up by 4 percent and reached Birr 3.3 billion on quarterly basis but dropped by 31.9 percent on annual basis (Table 2.2). The 4 percent quarterly

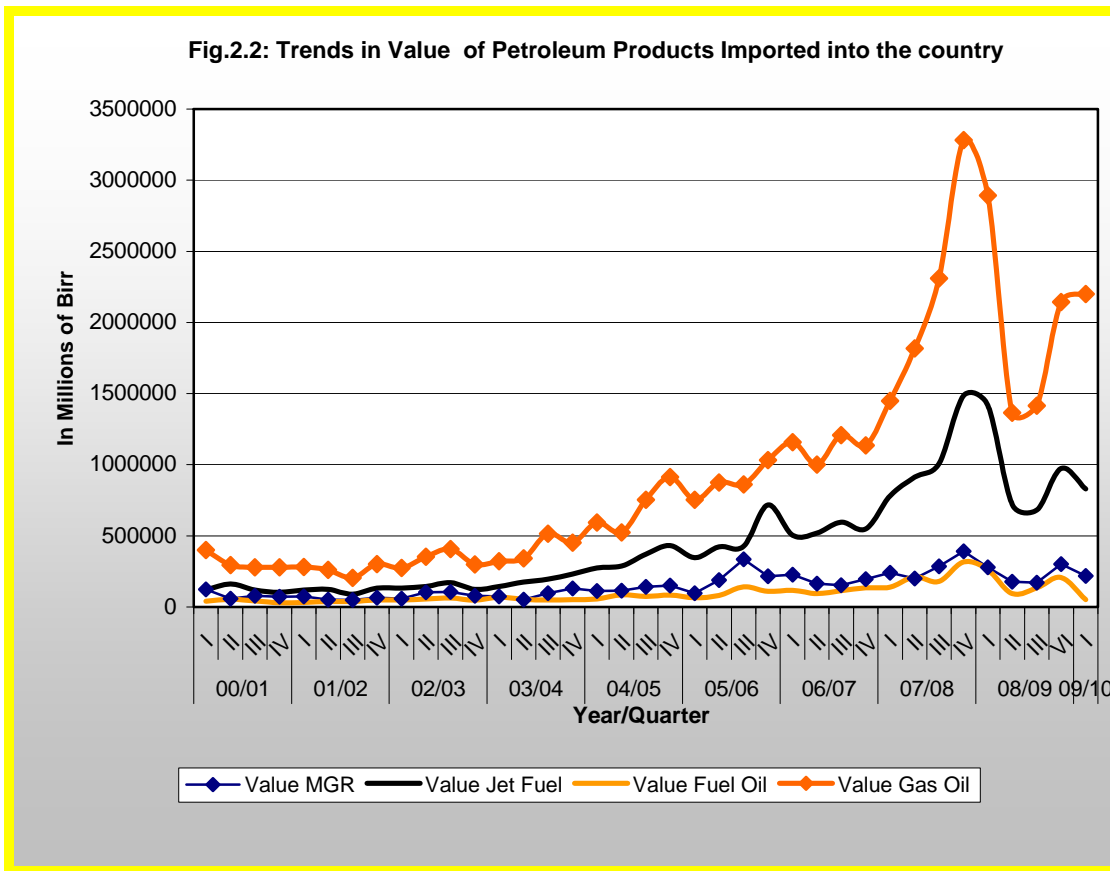
increase in the value of petroleum was exclusively attributed to 17 percent surge in the value of gas oil, which more than offset the decrease in other products.

Table 2.2 Value of Petroleum Products Imported

(In 000 Birr)

	2008/09				2009/10		Percentage Change	
	Qtr I		Qtr IV		Qtr I			
	A	Share In %	B	Share In %	C	Share In %	C/A	C/B
Regular Gasoline (MGR)	278,406	6	264,350	8.3	219,214	6.6	-21.3	-17.1
Jet Fuel	1,416,096	29	852,235	26.9	830,832	25.2	-41.3	-2.5
Fuel Oil	261,299	5	181,264	5.7	52,467	1.6	-79.9	-71.1
Gas Oil (ADO)	2,892,661	60	1,876,052	59.1	2,198,944	66.6	-24.0	17.2
Total	4,848,462	100	3,173,901	100.0	3,301,458	100.0	-31.9	4.0

Source: EPE



Source: EPE

The FOB prices (USD/Mt) of petroleum products on average exhibited a 14.3 percent rise over the previous quarter, and a 41.5 percent fall compared to last year same period. The quarterly rise in the FOB prices of petroleum products was

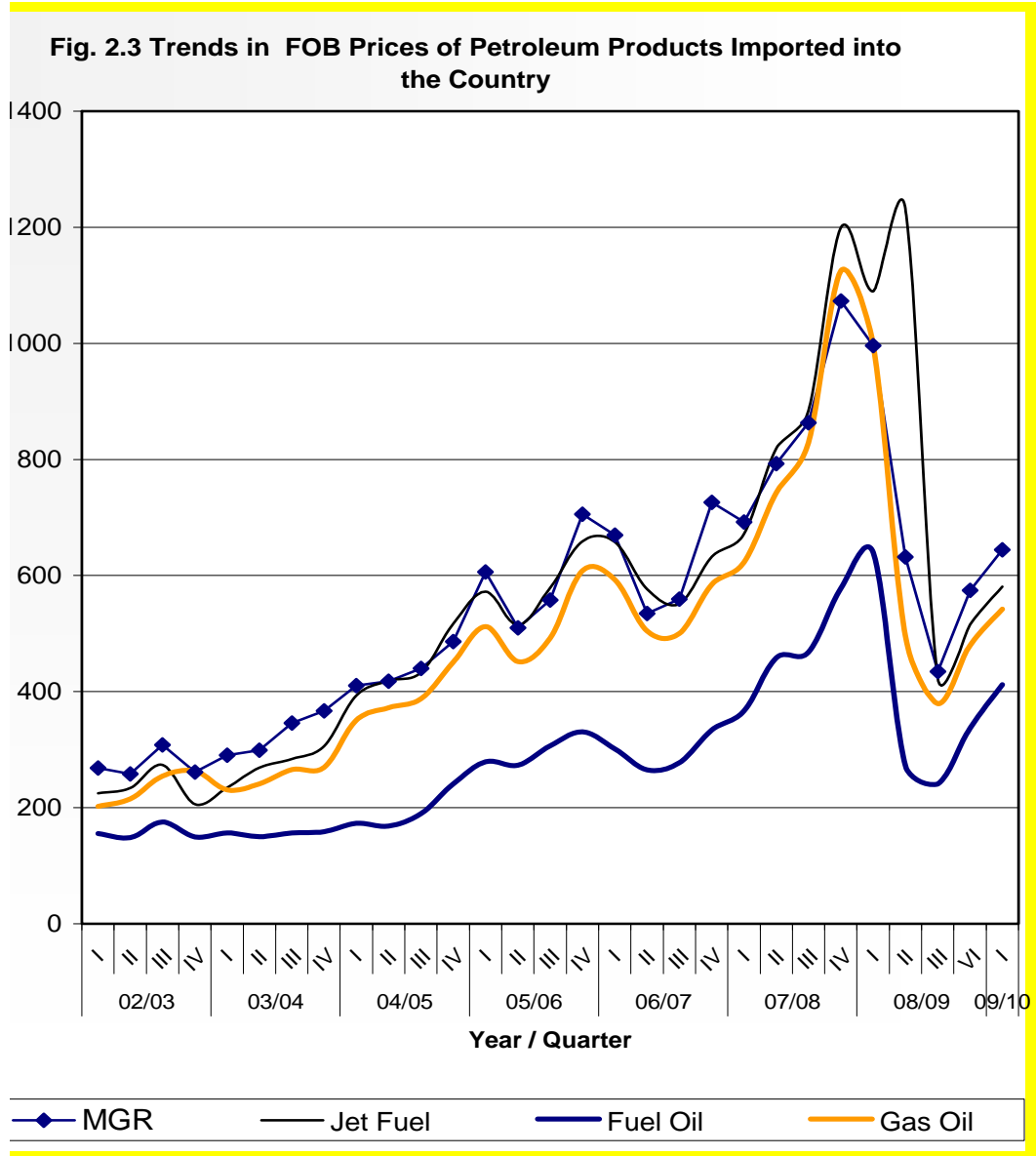
exhibited in higher prices of fuel oil (22.3 percent), gas oil (12.9 percent), jet fuel (12.6 percent) and regular gasoline (12.2 percent). On the contrary, year-on-year basis FOB prices of all petroleum products tended to fall (Table 2.3).

Table 2.3: FOB Price of Petroleum Products Imported

(In USD/Metric Tone)

Petroleum Products	2008/09		2009/10	Percentage Change	
	Qtr I	Qtr IV	Qtr I		
	A	B	C	C/A	C/B
Regular Gasoline (MGR)	996.2	574.2	644.1	-35.3	12.2
Jet Fuel	1089.7	515.6	580.7	-46.7	12.6
Fuel Oil	639.3	337.0	412.2	-35.5	22.3
Gas Oil (ADO)	996.9	480.0	541.9	-45.6	12.9
Average	930.5	476.7	544.7	-41.5	14.3

Source: EPE



Source: EPE

In the first Quarter of 2009/10, domestic retail prices (Birr/ Liter) of all petroleum products, proxied by Addis Ababa retail price, showed an average increment of 27.7 and 22.2 percent against the previous quarter and same quarter of last year, respectively. The rise in domestic

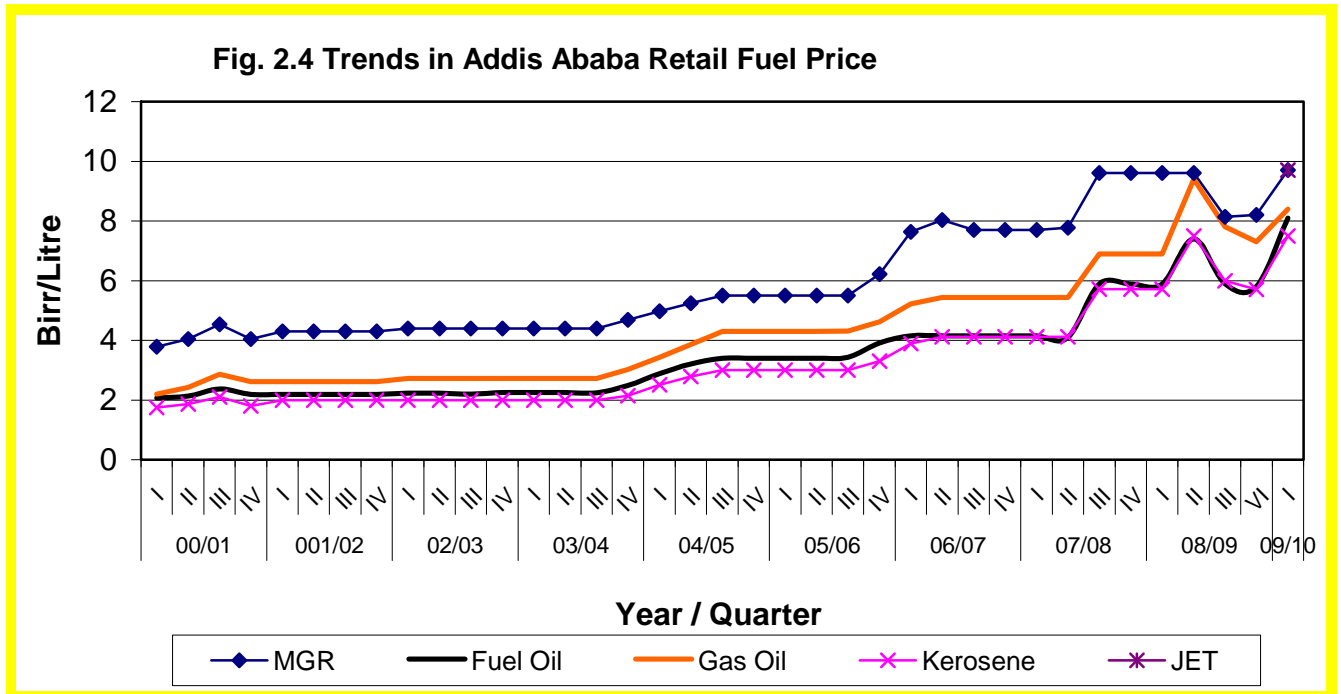
retail prices of petroleum products came from the surge in the prices of all the products. In Ethiopia domestic oil prices are adjusted monthly on the basis of price changes in the international market (Table 2.4).

Table 2.4: Retail Prices of Fuel in Addis Ababa

(Birr/Liter)

Petroleum Products	2008/09		2009/10	Percentage Change	
	Qtr I	Qtr IV	Qtr I	C/A	C/B
	A	B	C		
Regular Gasoline (MGR)	9.6	8.2	9.7	0.6	18.3
Fuel Oil	5.9	5.8	8.1	37.5	40.6
Gas Oil (ADO)	6.9	7.3	8.4	22.4	16.5
Kerosene	5.7	5.7	7.5	30.4	30.2
Jet	7.4	7.8	9.7	31.3	24.1
Average	7.0	6.7	8.4	22.2	27.7

Source: EPE



Source: EPE

Electric Power Generation

According to EEPCo, the total amount of electric power generated in the first quarter of 2009/10 reached 866,708.4 million KWH, which was 14.4 percent higher than the preceding quarter but 11.0 percent lower than same quarter of last year (Table 2.5).

Of the total electric power generated during the period some 78.7 percent was generated from hydropower and the remaining 20.6 and 0.6 percent from thermal and geothermal sources, respectively. The quarterly growth was the outcome of a significant increase in the power generated from hydro power (17.4 percent) and thermal power (4.3 percent) sources.

About 98.7 percent of the electric power was generated through Inter Connected System (ICS) and the rest 1.3 percent from Self Contained System (SCS) (Table 2.6).

The strategy of the government is to scale up electric power generation

capacity of the country to 2,218 MWH by 2010.

Table 2.5: Electric Power Generation

(In '000KWH)

Power Source	2008/09				2009/10		Percentage Change	
	Qtr I	Share	Qtr IV	Share	Qtr I	Share	C/A	C/B
	A	In %	B	In %	C	In %		
Hydropower	906,986.1	93.2	581,340.8	76.7	682,347.20	78.7	-24.8	17.4
Thermal Power	66,512.5	6.8	171,406.7	22.6	178,786	20.6	168.8	4.3
Geo-thermal			4,853.2	0.6	5,575.2	0.6		
Total	973,498.5	100	757,600.8	100	866,708.4	100.0	-11.0	14.4

Source: EEPCo

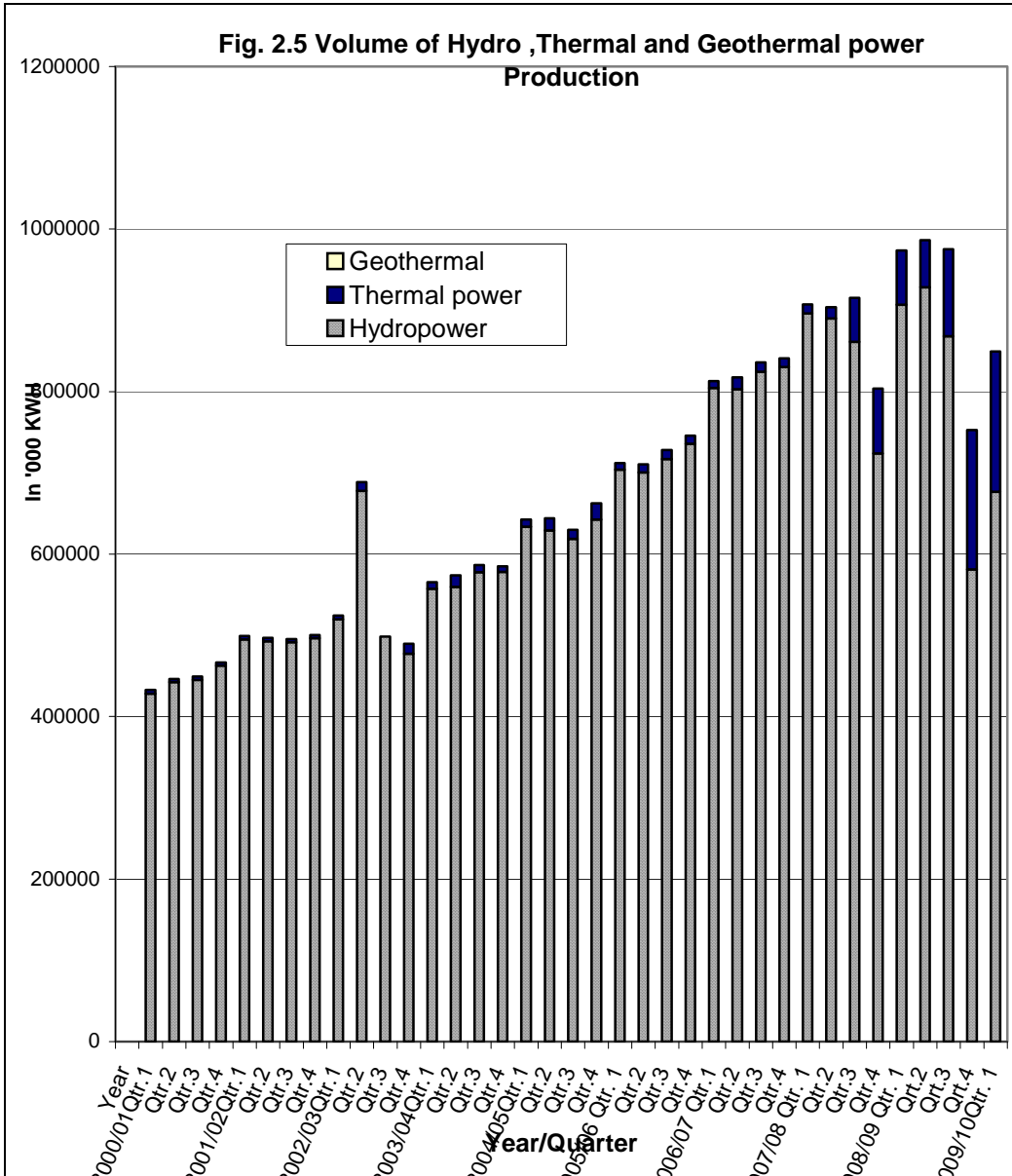
Table 2.6: Electric Power Generation from ICS and SCS

(In '000 KWH)

System of Power	2008/09				2009/10		Percentage Change	
	Qtr I	Share	Qtr IV	Share	Qtr I	Share	C/A	C/B
	A	In %	B	In %	C	In %		
ICS								
Hydro Power	902,621.1	92.7	581,340.8	75.9	676,800.8	78.1	(25.0)	16.4
Thermal Power	58,399.6	6.0	171,406.7	22.4	172,680.7	19.9	195.7	0.7
Geo-thermal	NA		4,853.2	0.6	5,575.2	0.6		
Sub-Total	961,020.7	98.7	757,600.8	98.9	855,056.7	98.7	(11.0)	12.9
SCS								
Hydro Power	4,365.0	0.4	194.7	0.03	5,546.4	0.6		
Thermal Power	8,113.5	0.8	8,247.4	1.1	6,105.3	0.7	(24.8)	(26.0)
Geo-thermal			0	0				
Sub-Total	12,478.5	1.3	8,442.1	1.1	11,651.7	1.3	(6.6)	38.0
Grand Total	973,499.1	100	766,042.9	100.0	866,708.4	100	(11.0)	13.1

Source: EEPCo

Fig. 2.5 Volume of Hydro ,Thermal and Geothermal power Production



Source: EEPCo